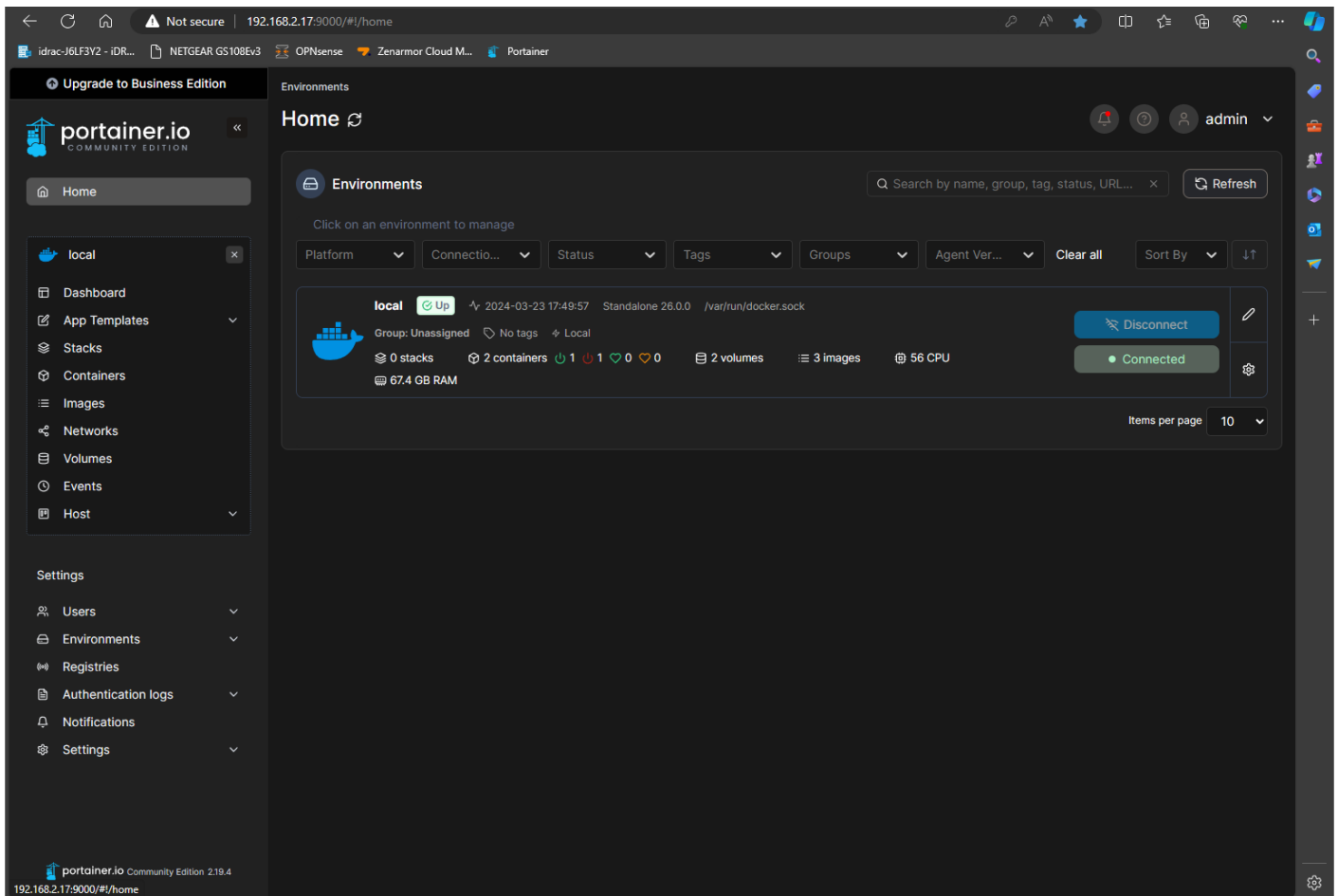


# Portainer

Web GUI to manage Docker containers being run on a Docker Engine hosted on an Ubuntu server

- [GUI Preview](#)
- [Deployment](#)

# GUI Preview



Once your docker container is successfully up and running, you can access your Portainer web GUI on port 9000 of your Ubuntu Server's static IP. The homepage above shows I have my docker environment currently running and connected, which means I can deploy containers and configure them however I'd like. Your next steps should be to connect your docker profile so that you can push images.

# Deployment

To deploy the Portainer container, you'll need to first set up a couple of configurations. These configurations will create a persistent volume, expose ports, and enable the container to run at start up automatically.

## Create Persistent Volume

In your docker engine CLI, run the following command:

- ```
docker volume create portainer_data
```

- Volume name is portainer\_data

## Run the Container

Run the container as you would any other container, with the following ports exposed: 8000 (Portainer Agent), 9000(Web GUI)

- ```
docker run -d -p 8000:8000 -p 9000:9000 --name=portainer --restart=always  
/var/run/docker.sock:/var/run/docker.sock -v portainer_data:/data  
portainer/portainer-ce
```

- **-d** to run in background
- **-p** to expose ports
- **--name** to name container
- **--restart** to make it run constantly
- **/var/run/docker.sock:/var/run/docker.sock** to enable portainer to manage the docker registry of the local machine
- **-v** declares a volume to use
- **portainer/portainer-ce** refers to the community edition version of the container

You're all set! Run through the set-up wizard via the web GUI that can be accessed at your docker engine IP port 9000 and create your admin account. You can now view the following dashboard:

- local
- Dashboard
- App Templates
- Stacks
- Containers
- Images
- Networks
- Volumes
- Events
- Host

Settings

- Users
- Environments
- Registries
- Authentication logs
- Notifications
- Settings

Environments

Search by name, group, tag, status, URL...

Refresh

Click on an environment to manage

Platform | Connec... | Status | Tags | Groups | Agent ... | Clear all | Sort By | ↓↑

**local** Up ↕ 2024-03-24 17:27:18 Standalone 26.0.0 /var/run/docker.sock

Group: Unassigned No tags Local

0 stacks 3 containers 1 2 0 0 2 volumes 2 images 56 CPU

67.4 GB RAM

Disconnect

Connected

Items per page 10