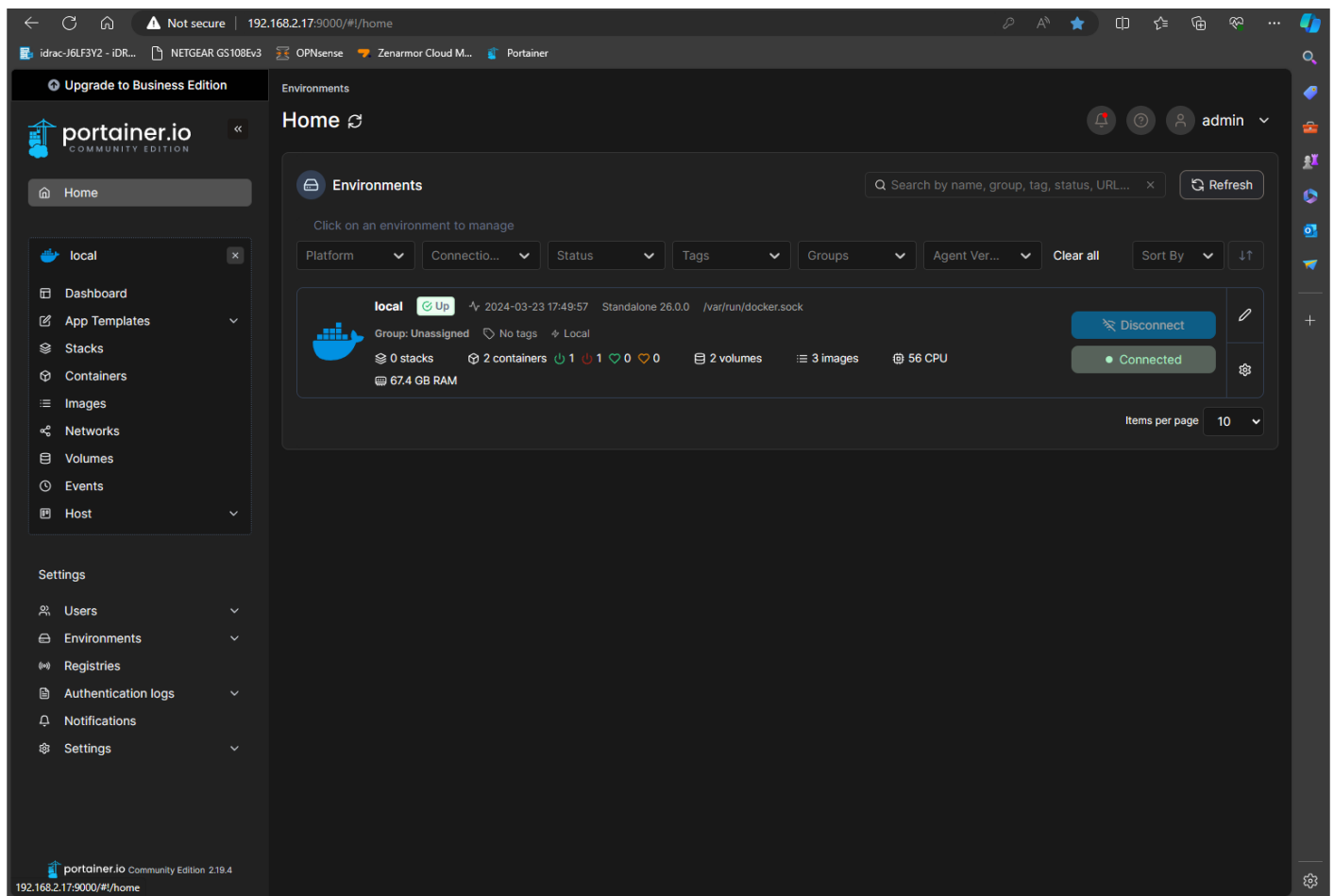


# GUI Preview



Once your docker container is successfully up and running, you can access your Portainer web GUI on port 9000 of your Ubuntu Server's static IP. The homepage above shows I have my docker environment currently running and connected, which means I can deploy containers and configure them however I'd like. Your next steps should be to connect your docker profile so that you can push images.

Revision #1

Created 23 March 2024 22:55:07 by Austin

Updated 4 April 2024 01:51:22 by Austin