

Lab Networking

Networking Considerations + Topology

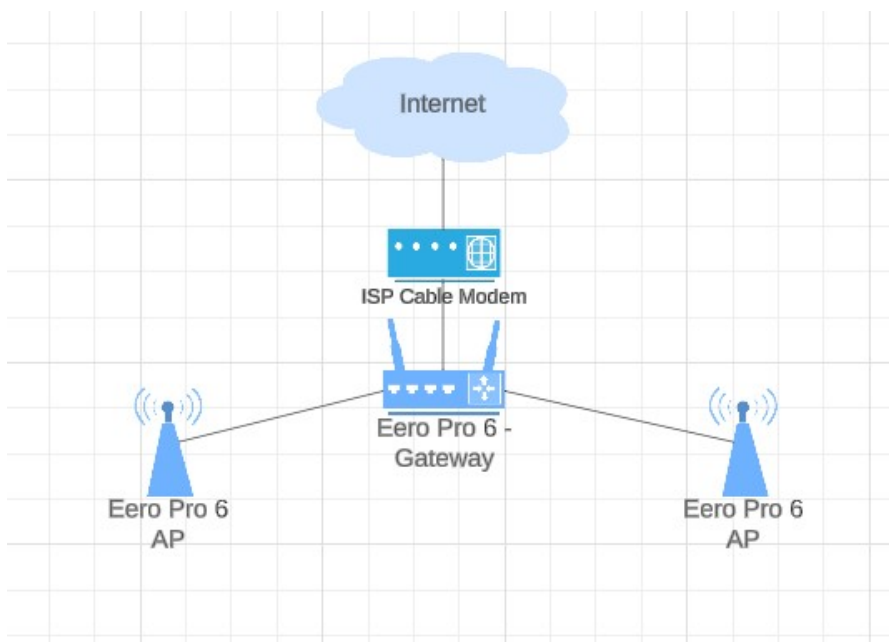
- Network Topology for Segmentation
- Updated Topology

Network Topology for Segmentation

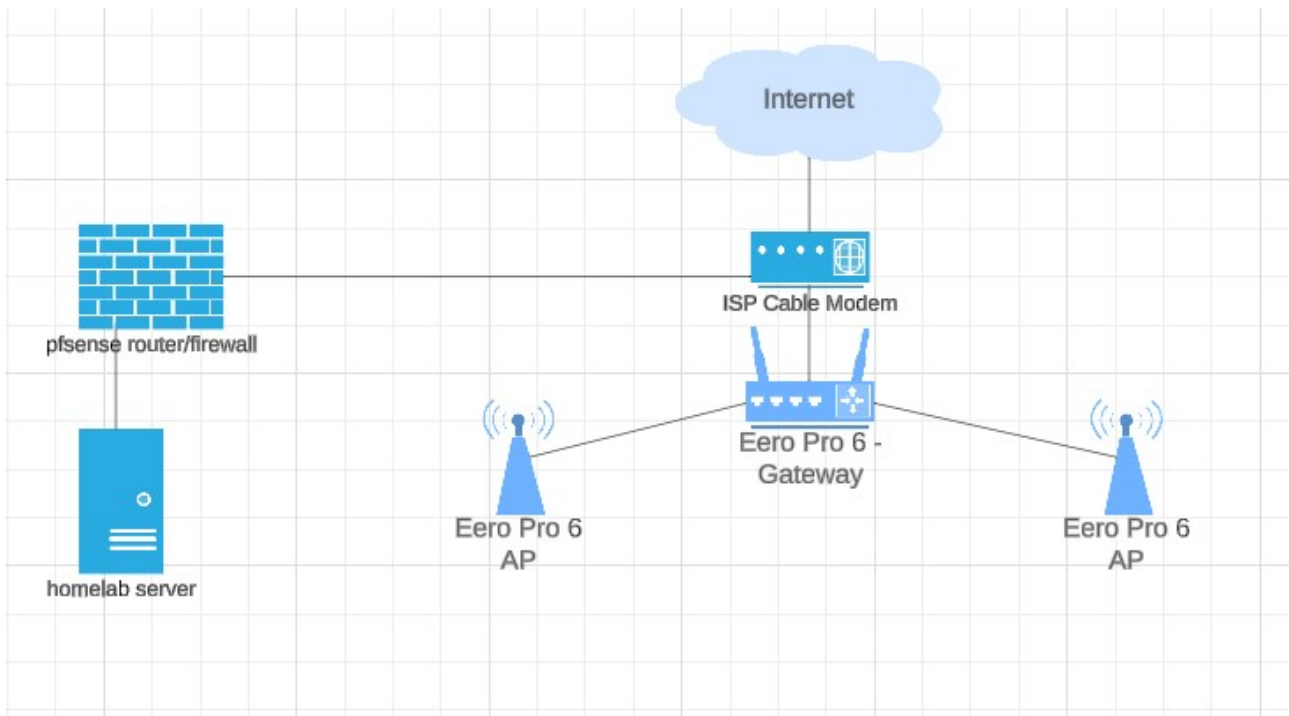
Before setting up any servers or hardware, I needed to make sure my topology lay out is logical, and also completely isolates my lab environment from other devices on the network. That way when I inevitably mess up, only my lab will get affected - super important if you live with roommates!

Below you'll find a couple of my initial versions that I thought of doing, and at the end you'll see my final topology.

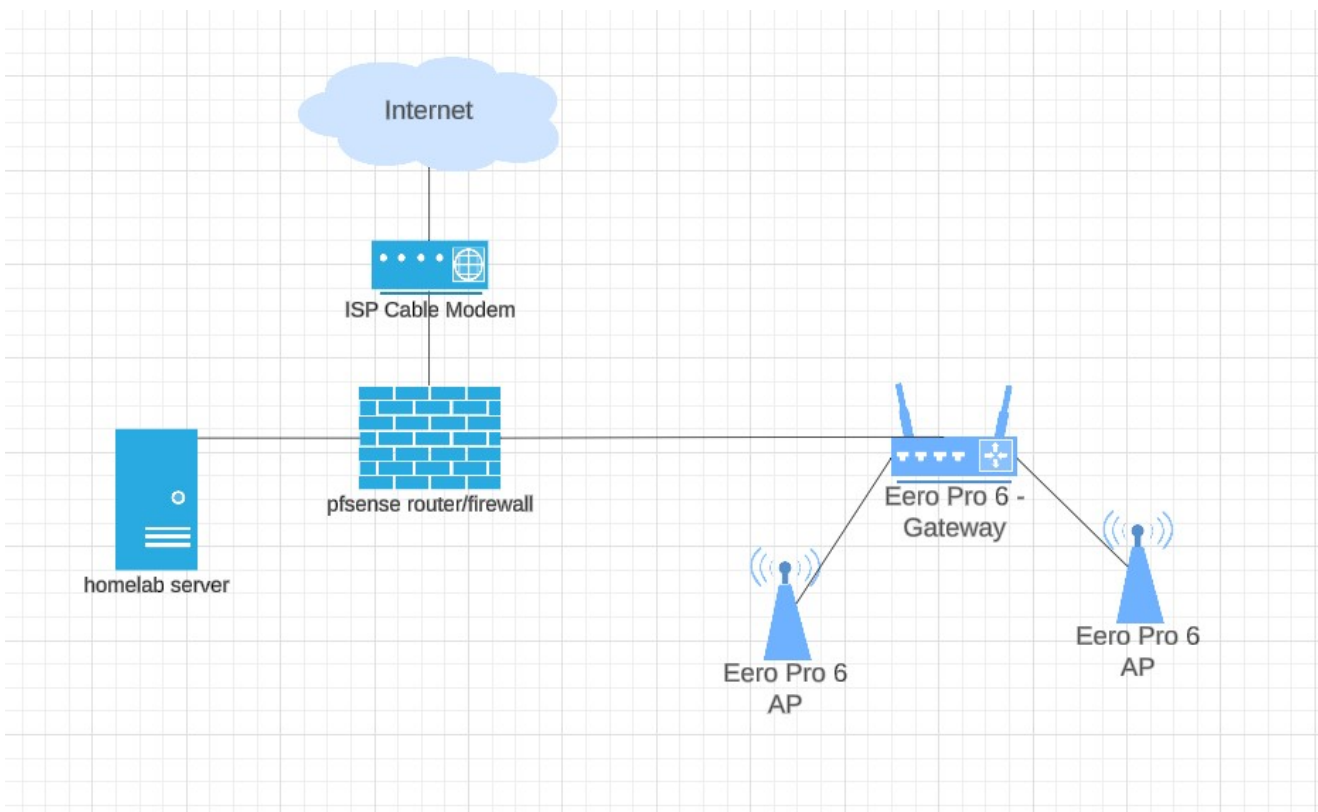
Current Network



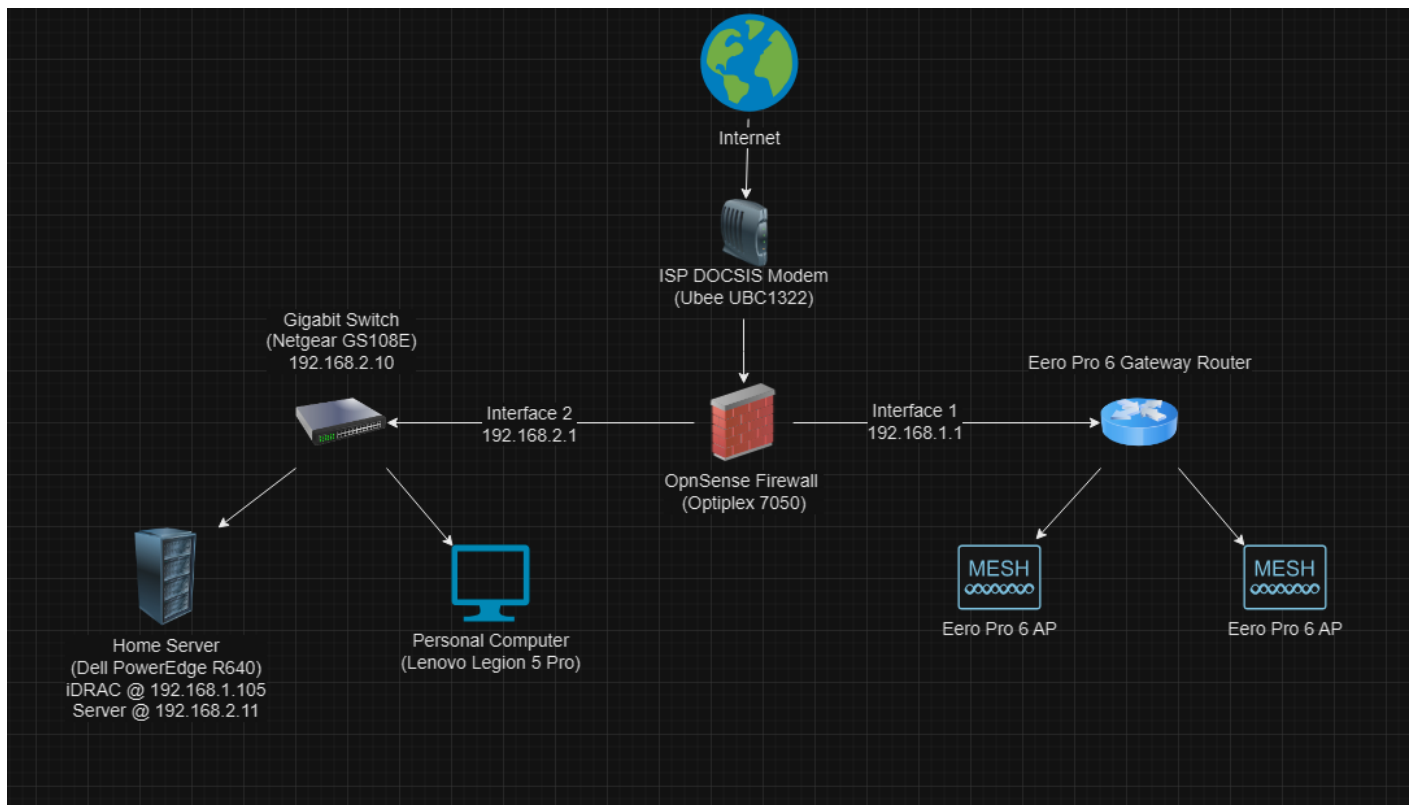
Version 1 (pictured below)



Version 2 (pictured below)



Final Result



Updated Topology

After moving and setting up my new network, heres what my updated network topology looks like:

