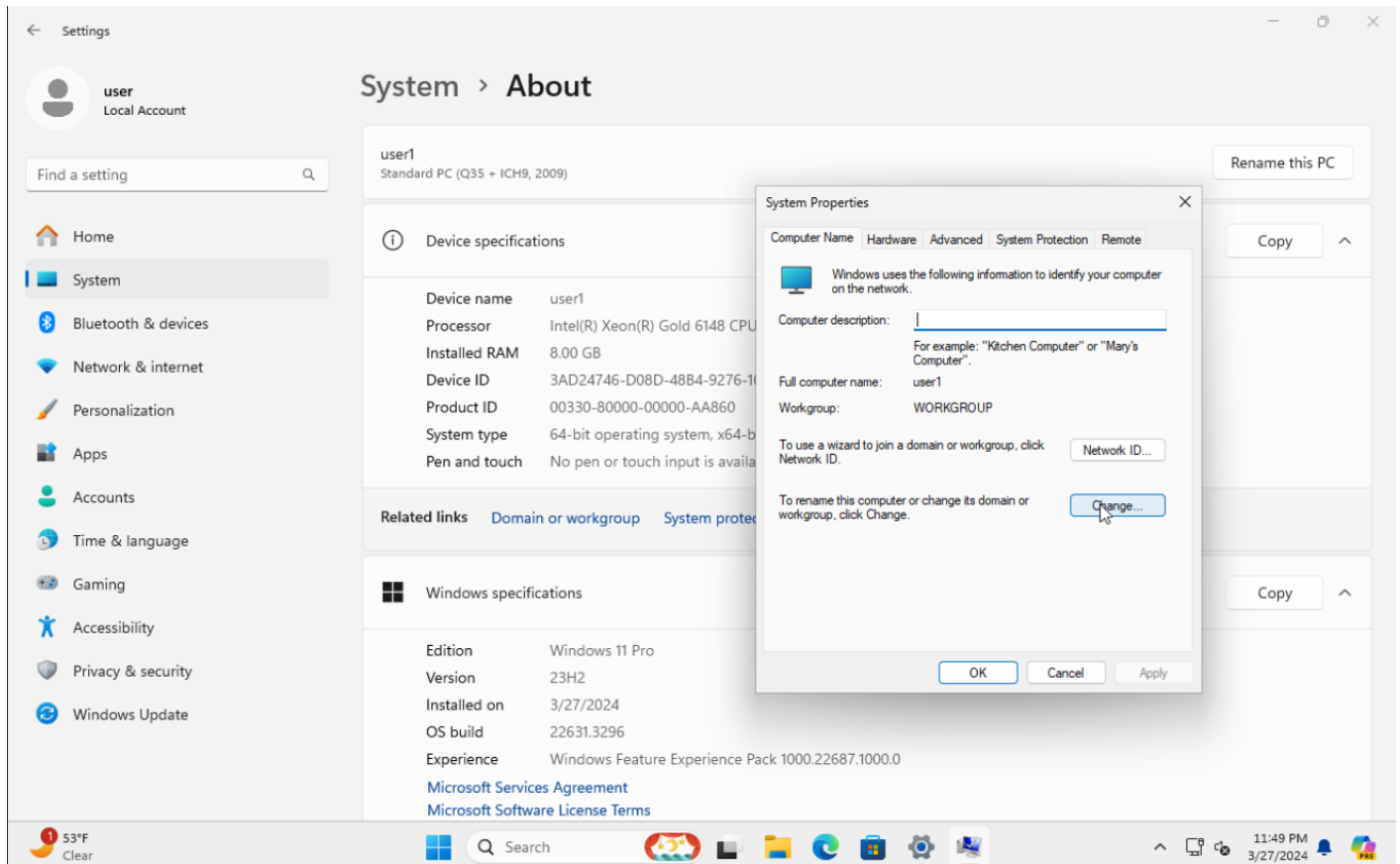
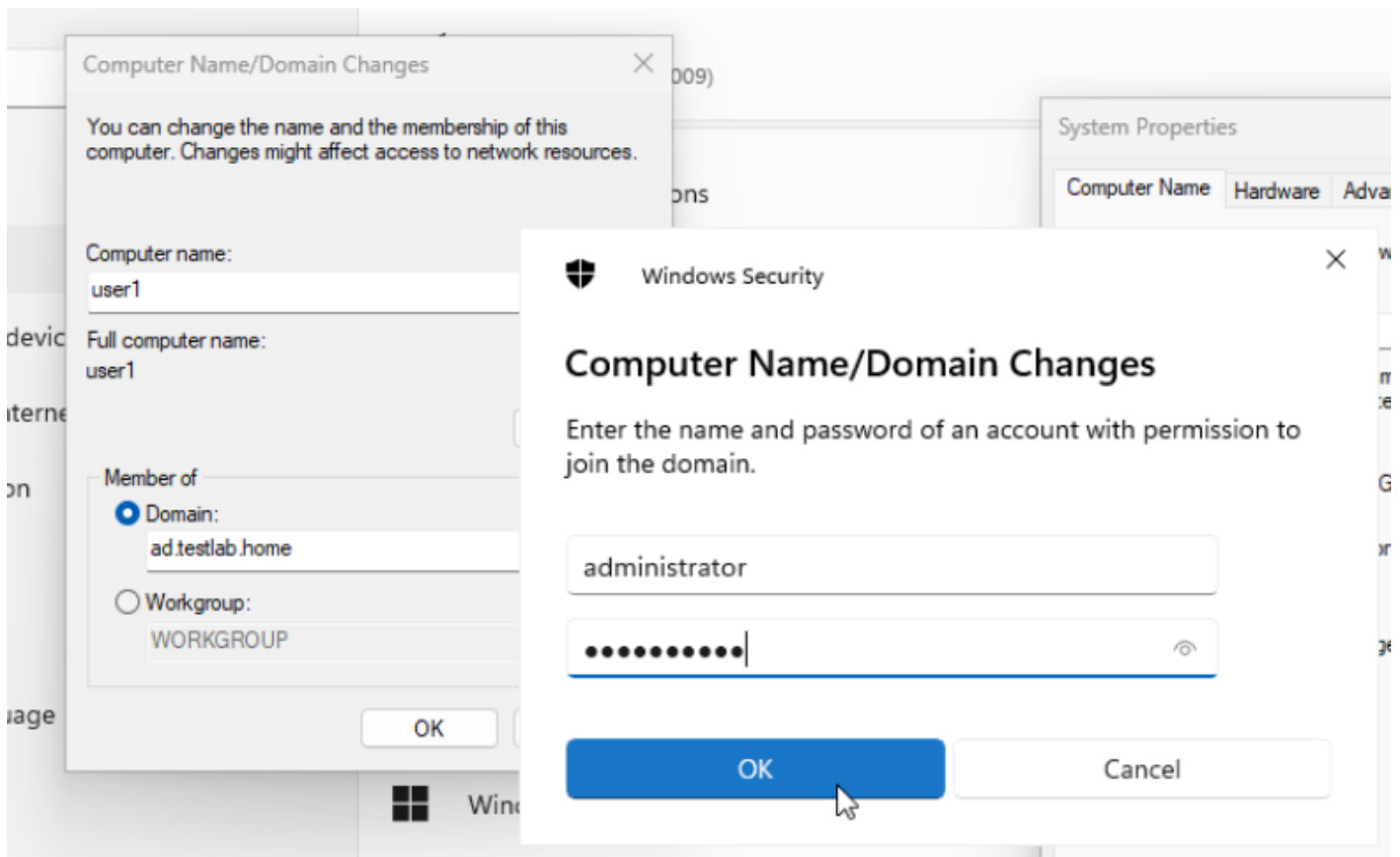


# Adding Users

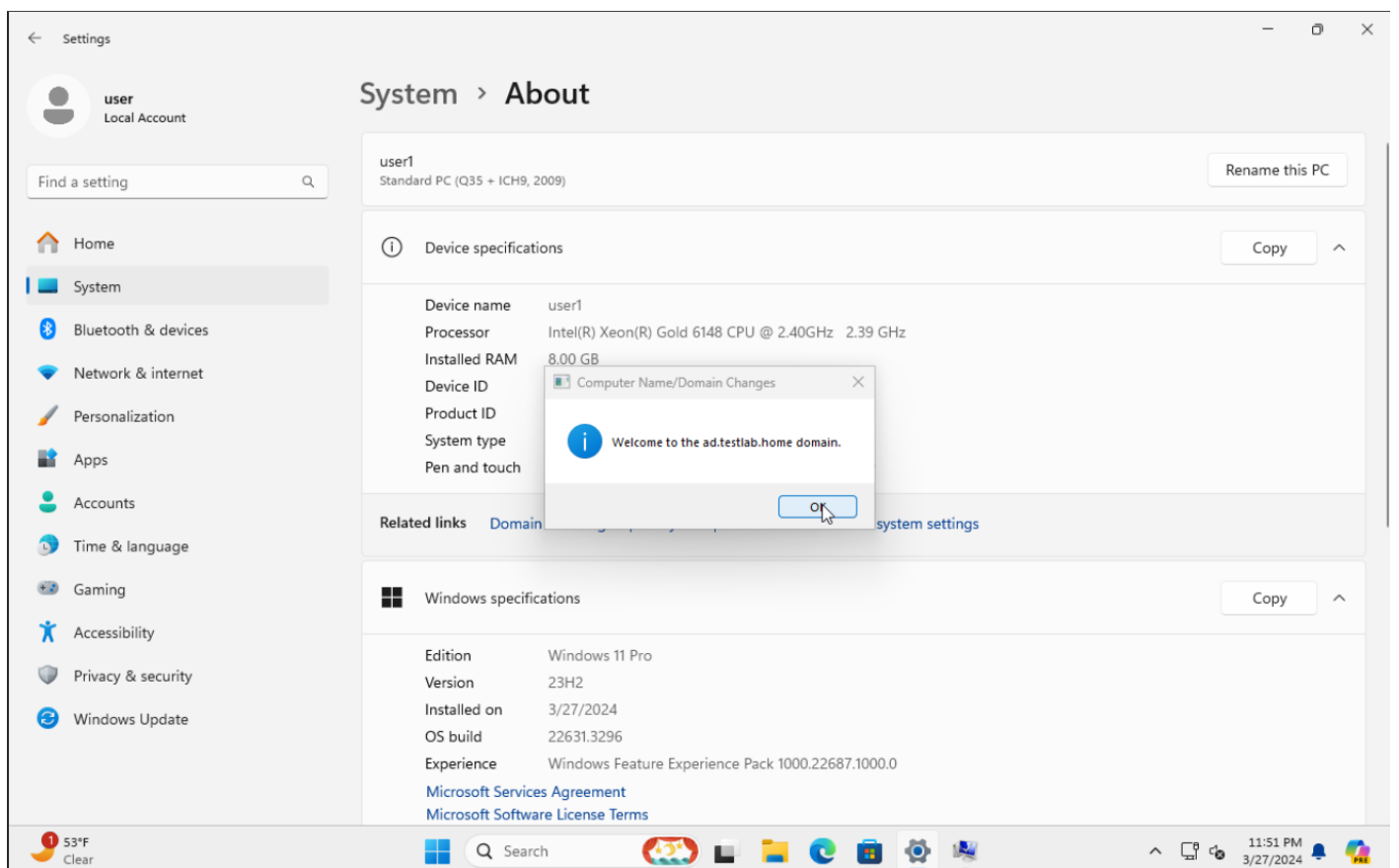
With everything configured properly, you should now be able to join your User VM to the Domain/Workgroup. To do this, navigate to Settings ---> About ---> Domain or workgroup in your Windows Settings:



Select Change and enter your Domain details. You will be prompted to enter admin credentials. Use your server admin credentials:



If successfully done, you should receive the following Welcome screen:



Repeat this on your other "Employee VMs" and you're all set!

Revision #2

Created 28 March 2024 04:47:50 by Austin

Updated 28 March 2024 06:19:34 by Austin