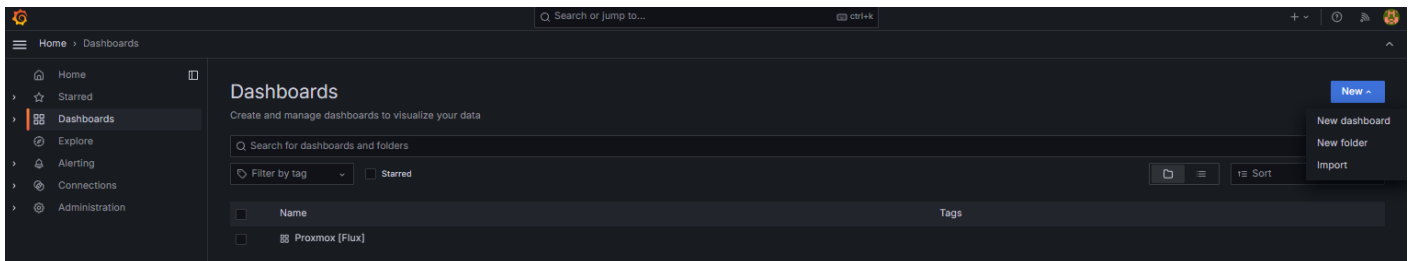
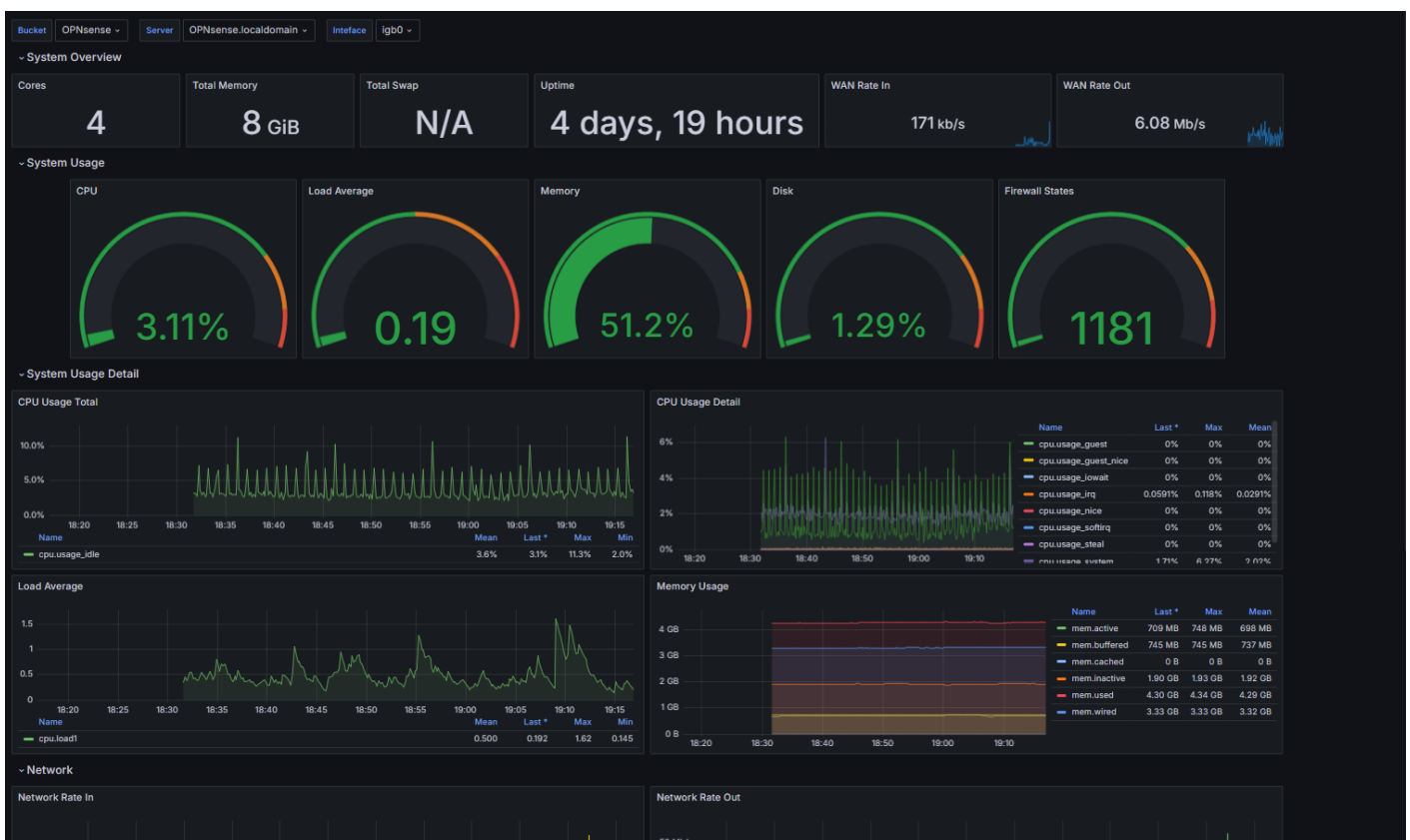


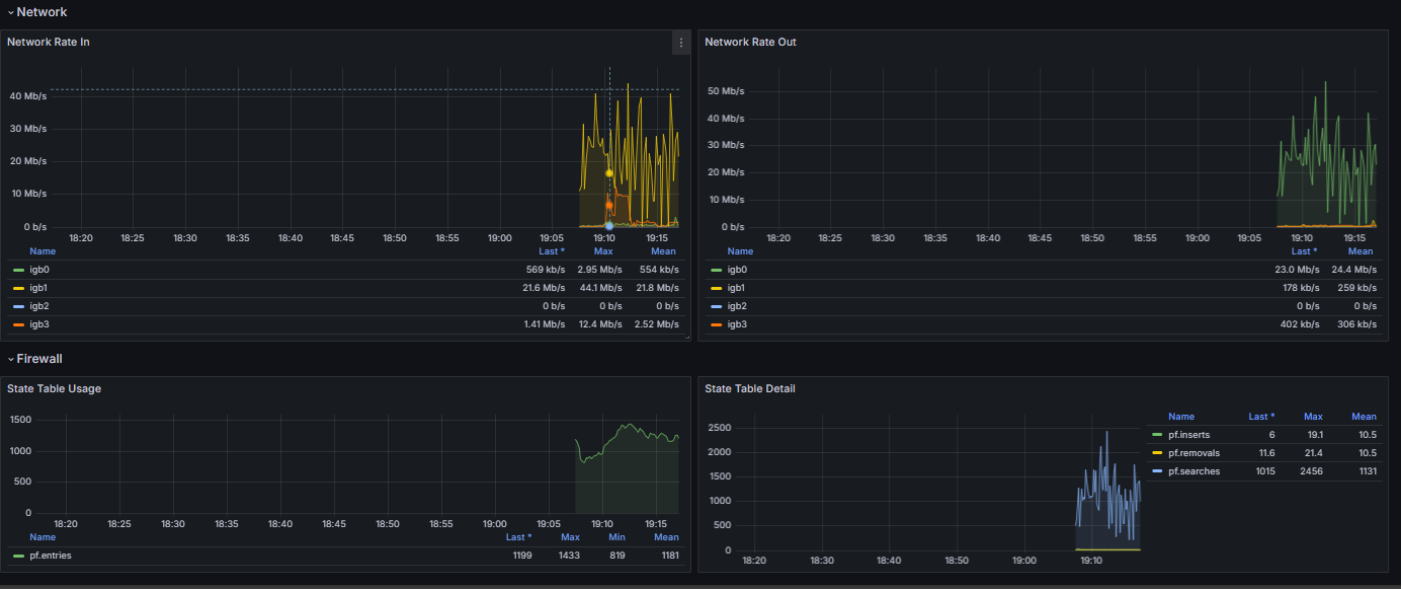
The Dashboard

In Grafana, either load a template or build your own custom dashboard by navigating to Home ---> Dashboards ---> New:



Given that OPNsense was forked from PfSense, you can either find PfSense dashboards and configure variables accordingly, use OPNsense templates, or just build your own dashboard. I used OPNsense Metrics. Load the dashboard and configure however you'd like!





Revision #1

Created 24 March 2024 23:39:58 by Austin

Updated 25 March 2024 00:18:29 by Austin